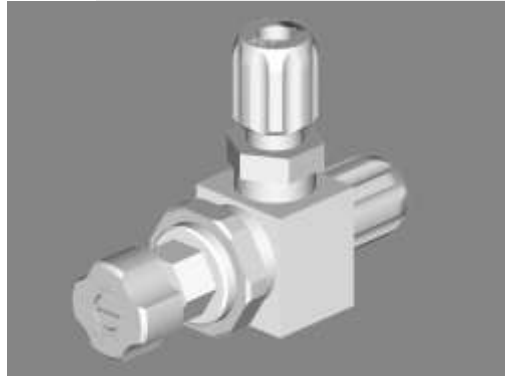


*PMV Series precision metering valves provide optimum resolution and linearity for control and adjustment of flow settings.*



## PMV Precision Metering Valve

### ***Precise Fluid Control and Adjustment***

- 100% functional pressure and leak testing—superior performance
- Patented features provide high resolution and linearity allowing fine adjustments for precise control
- Design with different surfaces for metering and shut-off—prevent deformation of metering surfaces.
- Failsafe valve stem design prevents over-tightening or over-loosening

valves

## Operation

The PMV metering pin is held securely in the valve body. This design feature protects the metering pin against misalignment due to pressure changes. Once the flow is set, the valve performs like a fixed orifice.

## Specifications

### MATERIALS

- Wetted parts:  
*PTFE and PFA*
- Non-wetted parts:  
*PVDF and polypropylene*

### OPERATING

- Maximum temperature: 120°C (248°F)
- Maximum pressure: 100 PSI

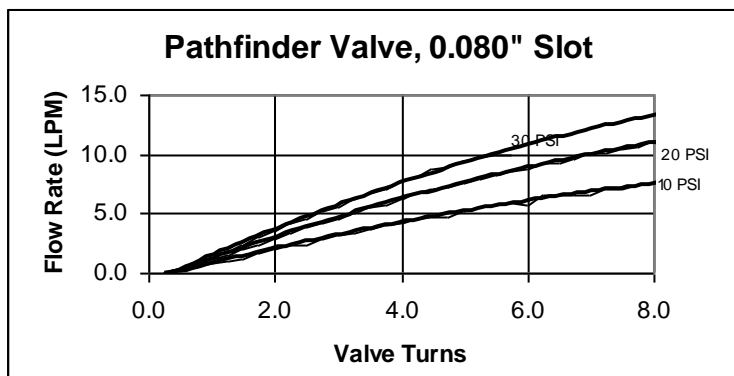
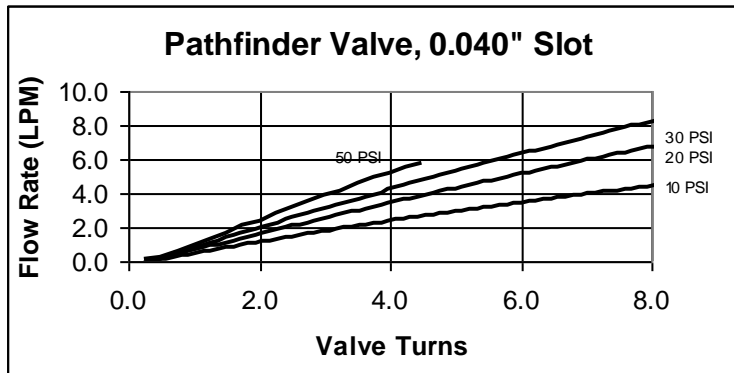
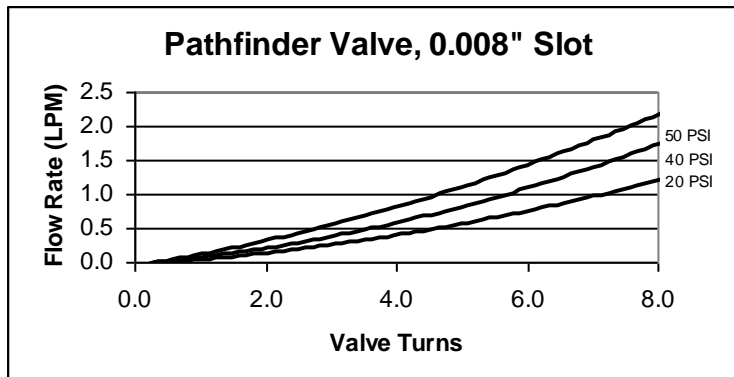
## Configuration Option

### STYLE

- Inline
- Angle

### CONNECTION SIZES

- 1/4", 3/8", 1/2", 3/4" and 1" fine thread flare
- 1/4", 3/8", 1/2", 3/4" and 1" Pillar Super 300®



Consult factory for other graphs.

## Ordering Information

To order, select a valve slot size, inlet size, outlet size and style from options below.

Complete Part Number = Valve Slot Size—Inlet Outlet—Style (Example: **612-6F6F-95**)

### LOW AND MEDIUM FLOW

**61X-XXXX-XX**

VALVE SLOT SIZE	
0.008"	1
0.040"	2
0.080"	3
0.125"	4

FITTING SIZE AND TYPE	
<i>F=Flare S=Pillar Super 300</i>	
1/4"	<b>4F</b>
	<b>4S</b>
3/8"	<b>6F</b>
	<b>6S</b>
1/2"	<b>8F</b>
	<b>8S</b>

STYLE
Angle = <b>blank</b>
Inline = <b>95</b>

### HIGH FLOW

**62X-XXXX-XX**

VALVE SLOT SIZE	
0.125"	1
0.250"	2
0.375"	3

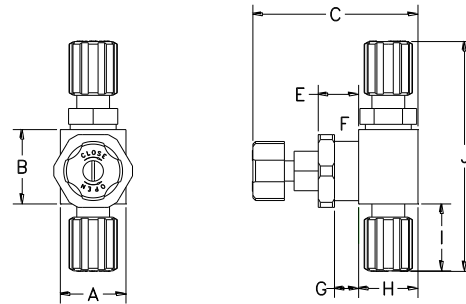
FITTING SIZE AND TYPE	
<i>F=Flare S=Pillar Super 300</i>	
1/2"	<b>8F</b>
	<b>8S</b>
3/4"	<b>12F</b>
	<b>12S</b>
1"	<b>16F</b>
	<b>16S</b>

STYLE
Angle = <b>blank</b>
Inline = <b>95</b>

# Installation Drawings

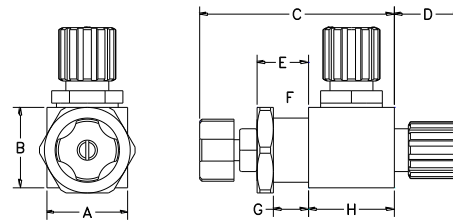
## LOW AND MEDIUM FLOW, INLINE

		Inches	mm
A	Width	1.25	31.8
B	Height	1.41	35.8
C	Valve open	3.70	94.0
	Valve closed	3.15	80.0
D	3/8" flarenut	NA	NA
E	Dimension	0.77	19.6
F	Panel hole dia.	1.19	30.2
G	Panel thickness	0.46	11.7
H	Depth	1.13	28.7
I	3/8" flarenut	1.27	32.3
J	Flr-nut to flr-nut	4.36	110.7



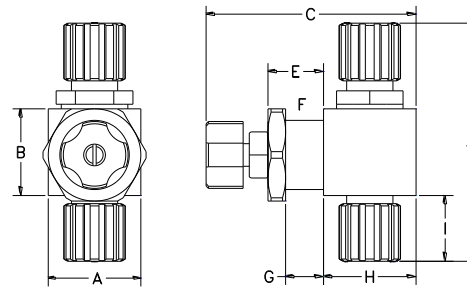
## LOW AND MEDIUM FLOW, ANGLE

		Inches	mm
A	Width	1.25	31.8
B	Height	1.41	35.8
C	Valve open	3.70	94.0
	Valve closed	3.15	80.0
D	3/8" flare nut	1.25	31.8
E	Dimension	0.77	19.6
F	Panel hole dia	1.19	30.2
G	Panel thickness	0.46	11.7
H	Depth	1.13	28.7
I	3/8" flarenut	NA	NA
J	Flr-nut to flr-nut	NA	NA



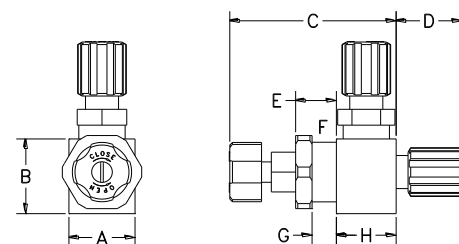
## HIGH FLOW, INLINE

		Inches	mm
A	Width	2.00	50.8
B	Height	1.88	47.8
C	Valve open	5.44	138.2
	Valve closed	4.54	115.3
D	3/8" flarenut	NA	NA
E	Dimension	1.20	30.5
F	Panel hole dia	1.56	39.6
G	Panel thickness	0.82	20.8
H	Depth	2.00	50.8
I	3/8" flarenut	1.43	36.3
J	Flr-nut to flr-nut	5.16	131.1



## HIGH FLOW, ANGLE

		Inches	Mm
A	Width	2.00	50.8
B	Height	1.88	47.8
C	Valve open	5.44	138.2
	Valve closed	4.54	115.3
D	3/8" flarenut	1.58	40.1
E	Dimension	1.20	30.5
F	Panel hole dia.	1.56	39.6
G	Panel thickness	0.82	20.8
H	Depth	2.00	50.8
I	3/8" flarenut	NA	NA
J	Flr-nut to flr-nut	NA	NA



\*Pillar Super 300 dimensions available upon request.

U.S. Patents: 5565631, 5549277, 5381826, 5078004 • Others pending  
 Futurestar®, Pathfinder®, Odyssey®, Sentinel® and AutoValve® are registered trademarks of Futurestar Corp.  
 Super 300 Type Pillar Fitting® is a trademark of NIPPON PILLAR PACKING CO., LTD.

Futurestar Corporation • 1470 Lake Drive West • Chanhassen MN 55317 • 952 942 8388 • 952 942 8661 fax • futurestarcorp.com  
 ©2013 Futurestar Corp., Printed in the USA

